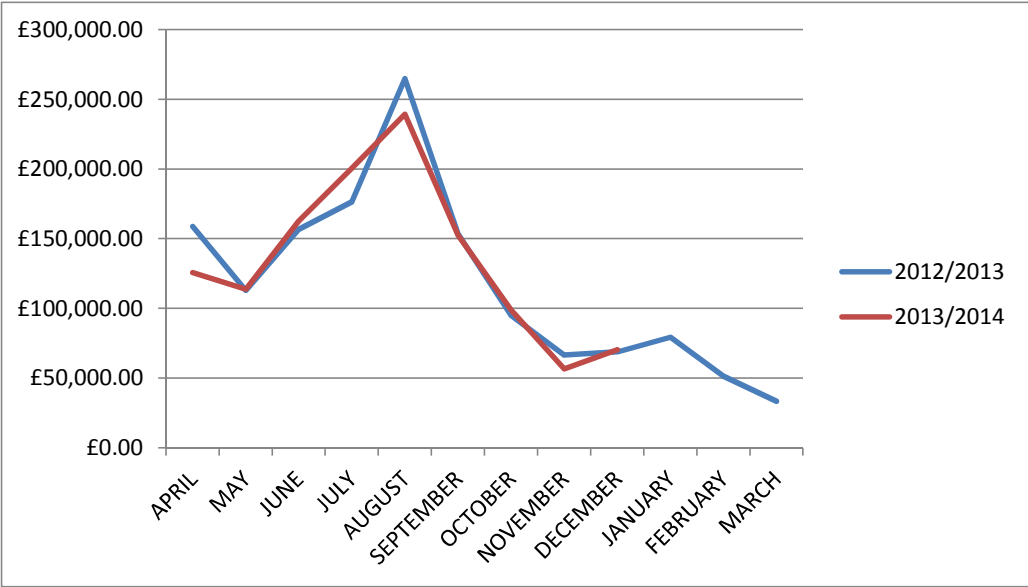


PAY & DISPLAY OFF-STREET PARKING INCOME

MONTH	12/13 INCOME	13/14 INCOME
APRIL	-£158,700.74	-£125,719.93
MAY	-£112,987.07	-£113,795.50
JUNE	-£156,624.45	-£162,807.27
JULY	-£176,587.83	-£200,579.87
AUGUST	-£264,893.63	-£239,487.36
SEPTEMBER	-£153,490.34	-£152,560.21
OCTOBER	-£94,921.61	-£98,864.54
NOVEMBER	-£66,588.70	-£56,587.81
DECEMBER	-£68,897.40	-£70,412.49
JANUARY	-£79,430.03	£0.00
FEBRUARY	-£51,335.14	£0.00
MARCH	-£33,491.05	£0.00
	-£1,417,947.99	-£1,220,814.98



Reason for additional income in April 2012:

Easter fell late in April 2012

Reason for additional income in August 2012-13 and large difference between July 2012 and July 2013:

£13,597 for July 2012 went into August 2012

£9,576 was funded from Palmers profits for the removal of the Power Substation.

Reason for differences between November

Income corrections due to miscodings by the Cashiers Electronic System.