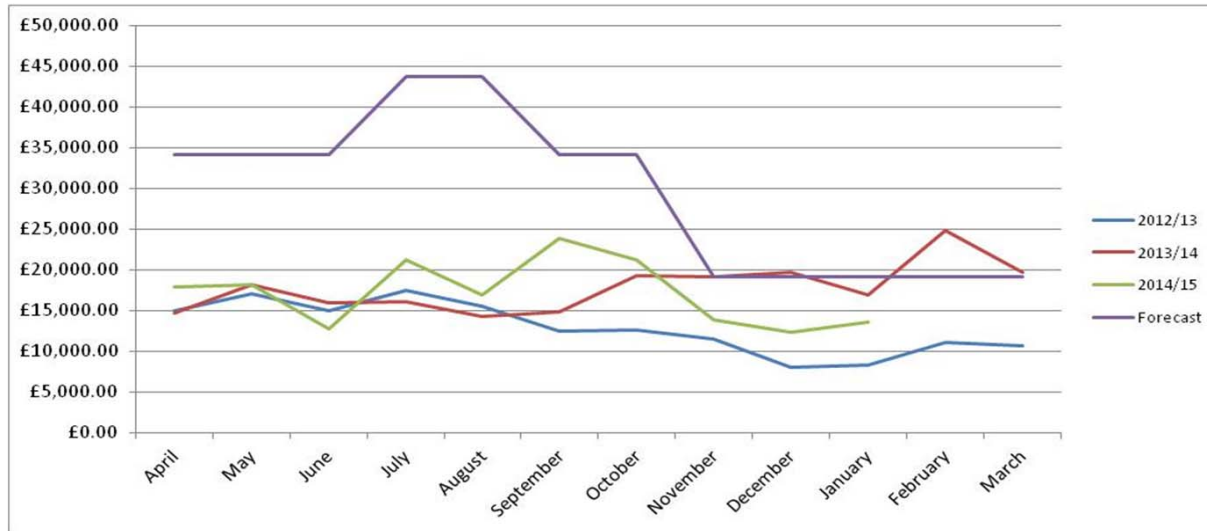


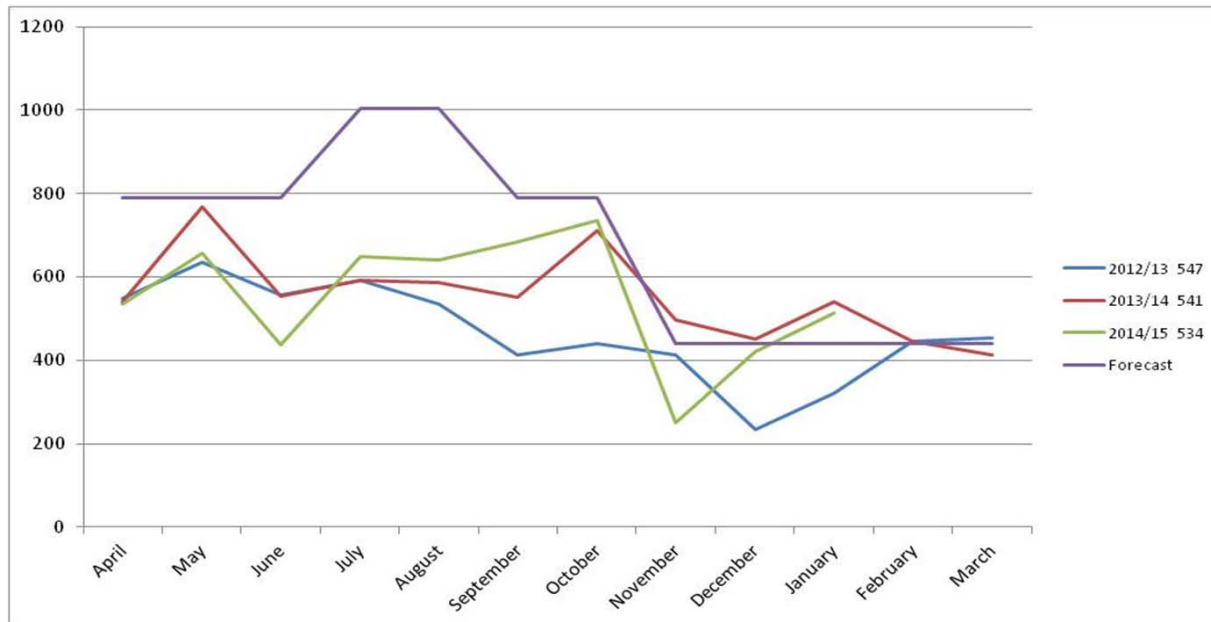
Great Yarmouth On Street
Report Date: 09 February 2015

Reporting Period	01 Oct 2013 - 31 Dec 2013	01 Oct 2014 - 31 Dec 2014
Number of PCN's Issued	1657	1407
Percentage Paid	76.2%	76.1%
Percentage of cancellations	8.1%	6.6%
Percentage of Write Offs	6.5%	2.6%
Percentage Pending	9.1%	14.1%
Percentage Refunded	0.0%	0.2%
Percentage Misc	0.1%	0.4%
 Budget for period	 £72,444.00	 £72,444.00
Posted payments during period	£58,085.56	£47,410.33
	Paid	Paid
Higher at Full	150	68
Higher at Discount	769	753
Lower at Full	57	19
Lower at Discount	270	221
Charge Certificate	25	11
TEC/Warrant/Bailiff (Part Payment)	4	0

On Street PCN income received by month



On Street PCNs issued by month



Car Park	Apr-Jan 13-14	Apr-Jan 14-15	Difference
Anchor Gardens	£42,896.50	£46,613.45	9%
Beach Road Caister	£9,380.25	£8,668.88	-8%
Brewery Plain	£39,569.28	£40,042.87	1%
Euston Road	£76,912.72	£81,558.20	6%
Fullers Hill	£69,476.08	£68,560.73	-1%
George Street	£20,407.14	£18,784.58	-8%
Gorleston High Street	£7,520.23	£5,992.42	-20%
Greyfriars Way	£2,157.63	£1,796.67	-17%
Howard Street	£167,713.61	£169,704.55	1%
Jetty North	£53,000.80	£67,399.05	27%
Jetty South	£32,909.69	£39,133.63	19%
King Street	£119,874.39	£126,869.69	6%
Marina Centre North	£0.00	£15,864.33	
Marina Centre South	£83,502.54	£56,873.08	-32%
Market Place	£105,873.14	£108,619.73	3%
North Drive	£88,598.08	£137,690.13	55%
Sandown Road (Car)	£57,413.96	£55,676.55	-3%
Sandown Road (Lorry)	£8,326.03	£10,629.60	28%
St Nicholas	£139,440.04	£172,430.96	24%
Stonecutters Quay	£14,397.34	£13,411.00	-7%
	£1,139,369.46	£1,246,320.08	9%

Car Parks P&D ticket issue

