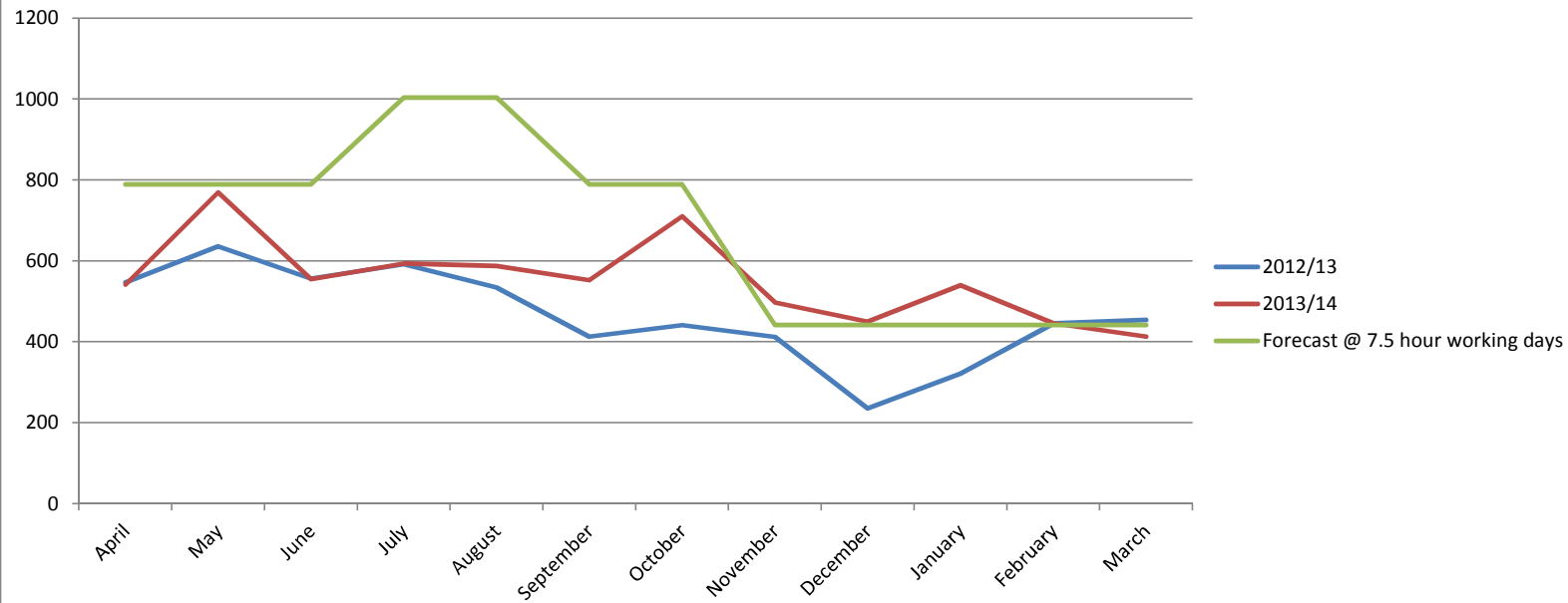


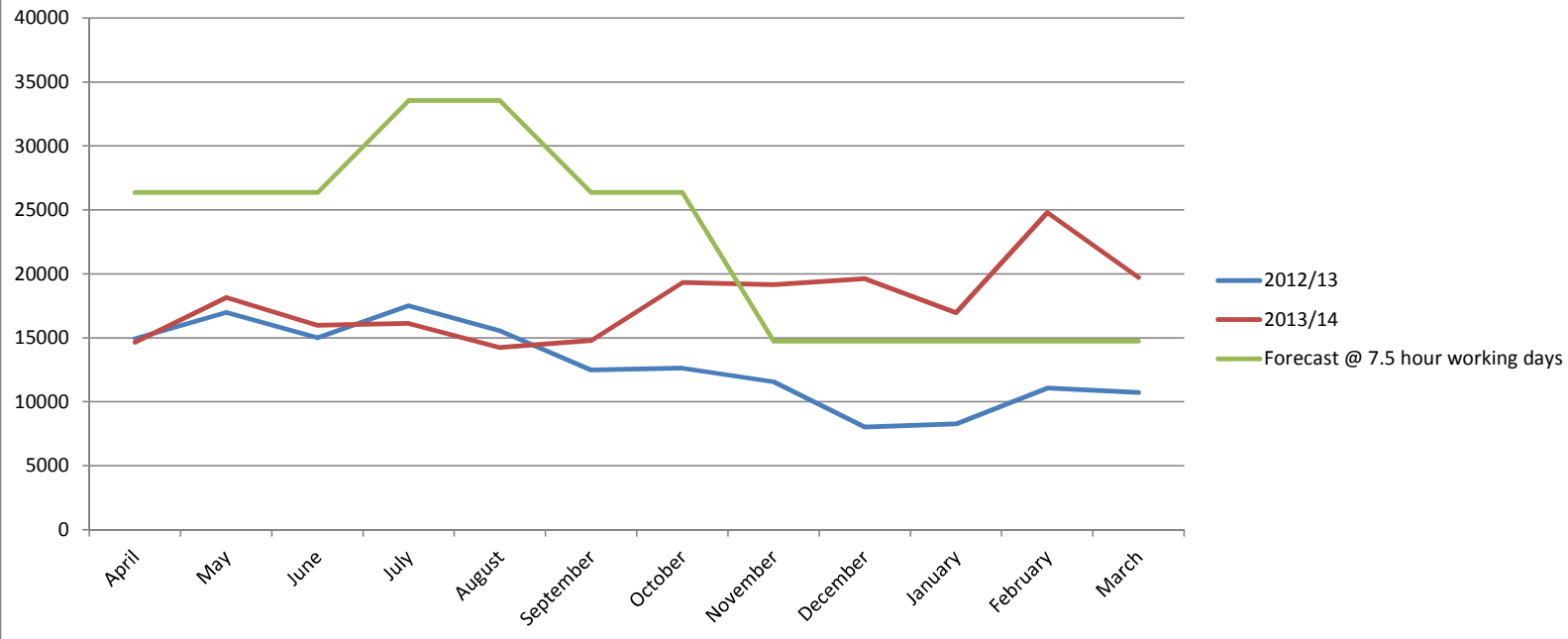
Great Yarmouth On Street
Report Date: 01 April 2014

| Reporting Period | 01 Jan 2013 - 31 Mar 2013 | | 01 Jan 2014 - 31 Mar 2014 | |
|--|---------------------------|------------|---------------------------|------------|
| Forecast PCNs issued | | 1719 | | 1719 |
| Number of PCN's Issued | | 1220 | | 1399 |
| Percentage Paid | | 71% | | 72% |
| Percentage of cancellations | | 9% | | 5% |
| Percentage of Write Offs | | 6% | | 2% |
| Budget for period | | £57,468.00 | | £57,468.00 |
| Posted payments during period | | £30,060.00 | | £61,222.00 |
| | Paid | Forecast | Paid | Forecast |
| Higher at Full | 118 | 251 | 52 | 251 |
| Higher at Discount | 619 | 587 | 695 | 587 |
| Lower at Full | 17 | 116 | 20 | 116 |
| Lower at Discount | 88 | 271 | 233 | 271 |
| Charge Certificate | 18 | 64 | 2 | 64 |
| TEC/Warrant/Bailiff (Part Payment) | 8 | 0 | 0 | 0 |
| Pending | | 155 | | 297 |
| Refunded | | 3 | | 0 |
| Cancelled | | 115 | | 70 |
| Written Off | | 79 | | 28 |
| Misc | | 0 | | 2 |
| PENDING STATUS DETAIL | | | | |
| 01 Jan 2013 - 31 Mar 2013 Pending Status | | | | |
| NOTICE TO OWNER | | 2 | | |
| CHARGE CERTIFICATE | | 1 | | |
| CASE ON HOLD | | 46 | | |
| CASE SENT TO BAILIFF A | | 106 | | |
| 01 Jan 2014 - 31 Mar 2014 Pending Status | | | | |
| PCN ISSUED (ATTACHED TO WINDSCREEN / HANDED TO DRIVER) | | 124 | | |
| ENFORCE | | 11 | | |
| MORE INFO | | 2 | | |
| DVLA | | 36 | | |
| NOTICE TO OWNER PRODUCED | | 82 | | |
| MISC | | 3 | | |
| CHARGE CERTIFICATE PRODUCED | | 44 | | |
| CASE ON HOLD | | 1 | | |

Great Yarmouth On Street PCN Issue by Month 2012/13 - 2013/14

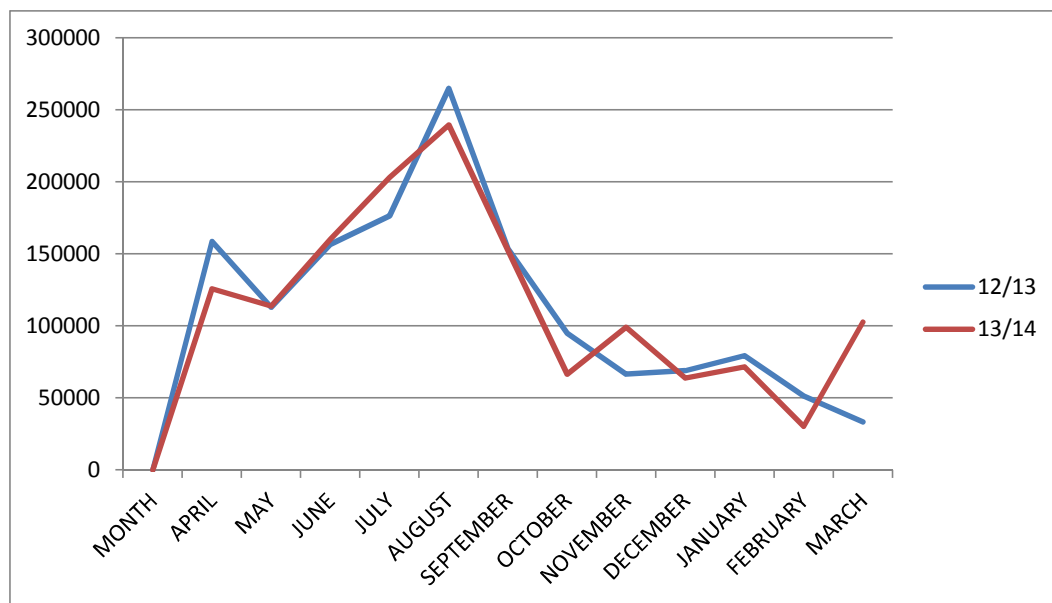


Great Yarmouth On Street Posted Payments by Month 2012/13 - 2013/14



PAY & DISPLAY OFF-STREET PARKING INCOME

| MONTH | 12/13 INCOME | 13/14 INCOME |
|-----------|-----------------|-----------------|
| APRIL | £158,700.74 | £125,719.93 |
| MAY | £112,987.07 | £113,795.50 |
| JUNE | £156,624.45 | £160,307.27 |
| JULY | £176,587.83 | £203,079.87 |
| AUGUST | £264,893.63 | £239,487.36 |
| SEPTEMBER | £153,490.34 | £152,560.21 |
| OCTOBER | £94,921.61 | £66,496.76 |
| NOVEMBER | £66,588.70 | £99,087.01 |
| DECEMBER | £68,897.40 | £63,870.82 |
| JANUARY | £79,430.03 | £71,664.28 |
| FEBRUARY | £51,335.14 | £30,288.97 |
| MARCH | £33,491.05 | £102,616.38 |
| | £1,417,947.99 | £1,428,974.36 |



Reason for additional income in April 2012:

Easter fell late in April 2012

Reason for additional income in August 2012-13 and large difference between July 2012 and July 2013:

£13,597 for July 2012 went into August 2012

£9,576 was funded from Palmers profits for the removal of the Power Substation.

Reason for differences between November

Income corrections due to miscodings by the Cashiers Electronic System.