

Great Yarmouth On Street
Report Date: 13 July 2015

Reporting Period	01 Apr 2014 - 30 Jun 2014	01 Apr 2015 - 30 Jun 2015
Number of PCN's Issued	1629	1778
Percentage Paid	75.0%	68.6%
Percentage of cancellations	10.0%	7.7%
Percentage of Write Offs	3.0%	2.0%
Percentage Pending	11.9%	21.5%
Percentage Refunded	0.0%	0.0%
Percentage Misc	0.0%	0.2%
Budget for period	£102,400.80	£102,400.80
Posted payments during period	£48,803.00	£45,241.00
	Paid	Paid
Higher at Full	125	64
Higher at Discount	741	780
Lower at Full	36	34
Lower at Discount	311	336
Charge Certificate	18	4
TEC/Warrant/Bailiff (Part Payment)	2	0

Year End 2014/15
Great Yarmouth On Street
Report Date: 21 June 2015

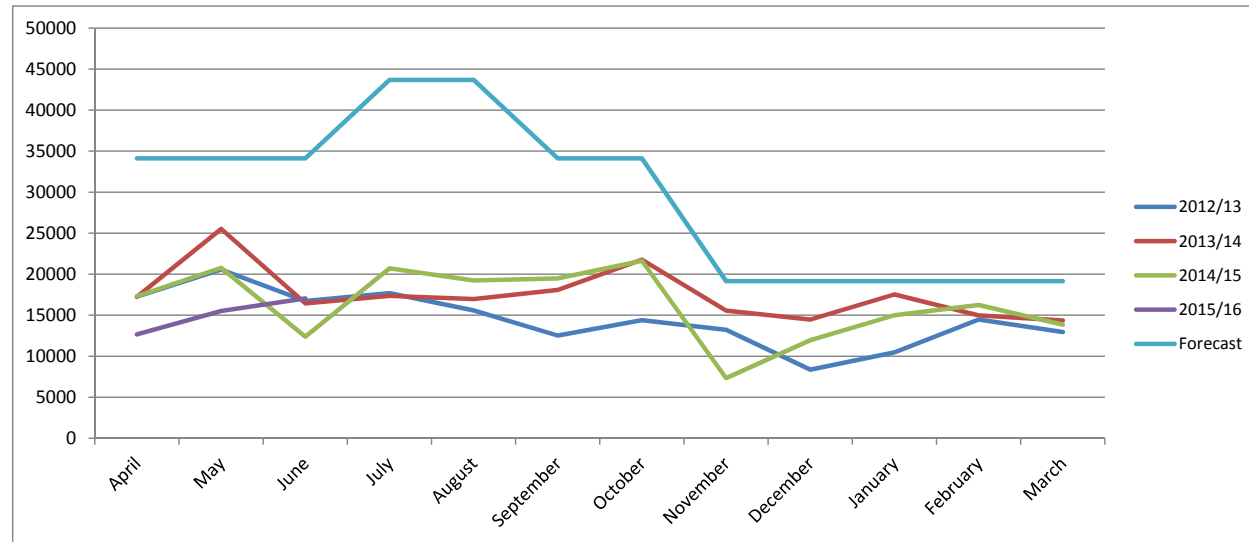
Reporting Period **01/04/2014 - 31/03/2015**

Number of PCN's Issued	6618
Percentage Paid	77.2%
Percentage of cancellations	8.8%
Percentage of Write Offs	3.8%
Percentage Pending	10%
Percentage Refunded	0.2%
Percentage Misc	0%

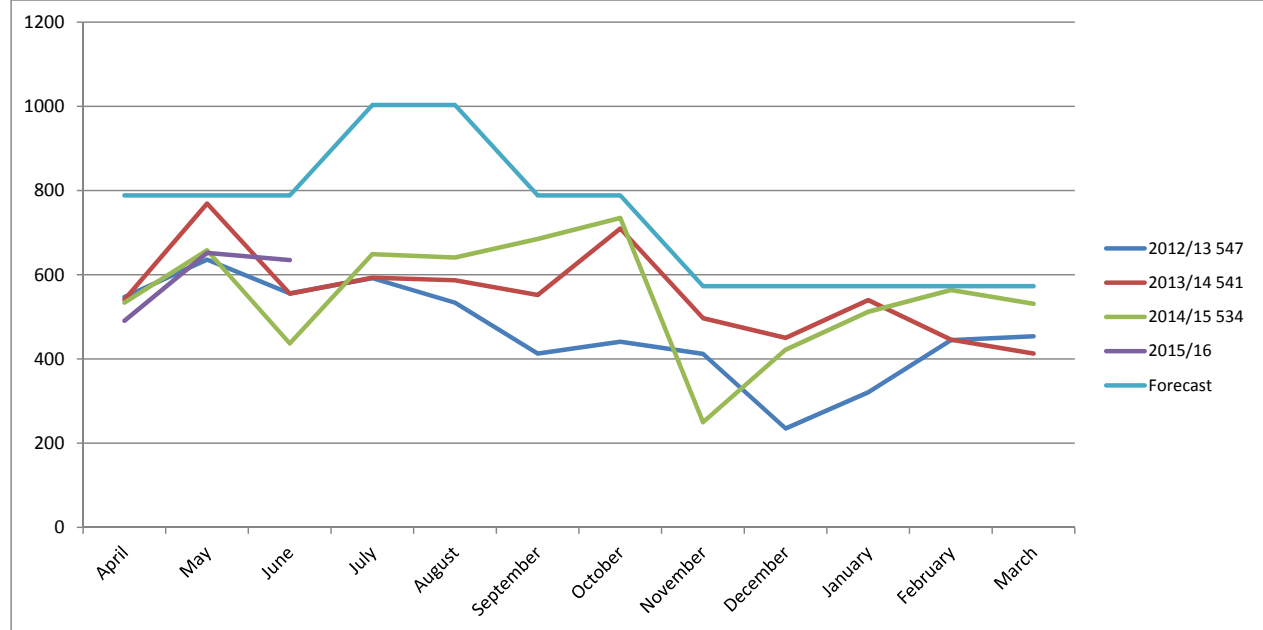
Budget for period	£386,694.00
Posted payments during period	£212,050.00

Paid Higher at Full	482
Paid Higher at Discount	3293
Paid Lower at Full	146
Paid Lower at Discount	1098
Paid Charge Certificate	79
Paid TEC/Warrant/Bailiff (Part Payment)	15

On Street PCN income received by month



On Street PCNs issued by month



Car Park

	2014/15
Anchor Gardens	£58,643.75
Beach Road Caister	£10,402.65
Brewery Plain	£54,153.35
Euston Road	£102,476.20
Fullers Hill	£90,887.95
George Street	£25,921.30
Gorleston High Street	£8,380.15
Greyfriars Way	£2,411.05
Howard Street	£232,668.70
Jetty North	£84,751.80
Jetty South	£49,498.45
King Street	£174,031.35
Marina Centre North	£21,305.10
Marina Centre South	£73,619.90
Market Place	£151,846.85
North Drive	£165,302.15
Sandown Road (Car)	£67,788.45
Sandown Road (Lorry)	£15,105.50
St Nicholas	£207,025.15
Stonecutters Quay	£18,043.75
	£1,614,263.55